

Morehouse Parish Profile



Report to Stakeholders

November 2009

About the LSU AgCenter

The LSU AgCenter is dedicated to providing innovative research, information and education to improve people's lives. Working in a unique statewide network of parish extension offices, research stations and academic departments, the LSU AgCenter helps Louisiana citizens make the best use of natural resources, protect the environment, enhance agricultural enterprises and develop human and community resources.



Morehouse Parish Extension Office

Address: P O Box 192
Bastrop, LA 71221

Phone: 318-281-5741

Fax: 318-283-6516

Email:

Morehouse@agcenter.lsu.edu

Web site:

LSUAgCenter.com/Morehouse

Hours: 8:00a.m. - 4:30 p.m.

Program Highlights

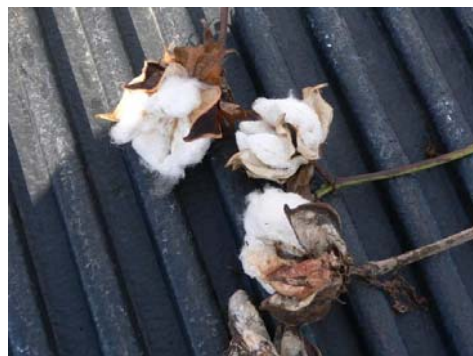
Agriculture & Natural Resources

Morehouse youth enjoyed learning about pumpkins grown by local farmers and donated to the schools. Morehouse agents produced and participated in the annual Morehouse Parish Crops Tour with 60 producers and agri-business men attending. Too much rain has devastated Morehouse cotton farmer's fields. Losses of yield, quality, and seed are widespread over the entire Morehouse cotton areas. Several crop demonstrations were harvested with the assistance of parish farmers. The results of these demonstrations are provided freely to all parish producers.



FCS

Individuals and families today deal with multiple issues in raising kids, eating right and spending smart in order to live well. Parenting education programs are presented to clients and teach skills needed to raise children from birth through adolescence. Job readiness and basic money skills are taught to help clients make better decisions upon entering the workforce. Nutrition programs taught are designed to help clientele increase their nutrition knowledge which in turn helps them live a healthier lifestyle.



4-H Youth Development

Morehouse Parish Club Leaders attended the area leader forum in Rayville on September 23, 2009. Leaders went to four sessions to enhance their school club meetings. Leaders attending the training were Sara Sharp, from Pine Grove, and April Guest, Community Club Leader.

Over twenty Morehouse Parish 4-Hers participated in the Northeast District Horse Show on July 1 and 2nd. Youth participated in barrels, poles, stake race, tie down roping, breakaway roping, halter, and western pleasure. Most of the youth qualified to participate in the state horse show which was held July 7-11, 2009, at the Ike Hamilton Expo Center in West Monroe.



Terry Erwin

Parish Chair

terwin@agcenter.lsu.edu

Rebecca Goodman

Administrative Coordinator 3

rgoodman@agcenter.lsu.edu

Programs

4-H and Youth Development

Agriculture & Natural Resources (ANR)

- Animal Production
- Environment/Watersheds
- Horticulture/Lawns and Gardens
- Pest Management
- Corn
- Soybeans
- Rice
- Cotton

Family & Consumer Sciences (FCS)

- Parents Preparing for Success
- Family Resource Management
- FNP - Family Nutrition Program
- Nutrition and Health

Who we reach.

1375 - Youth (includes 498 4-H members & 12 school 4-H clubs)
 22,150- Adults
 2,650 Ag & Natural Resources
 19,500 Family Consumer Sciences

How we reach them:

4-H clubs	Class series
School Enrichment	Demonstrations
Field days	Workshops
Newsletters	Web sites
Publications	Social media

Expanding our efforts:

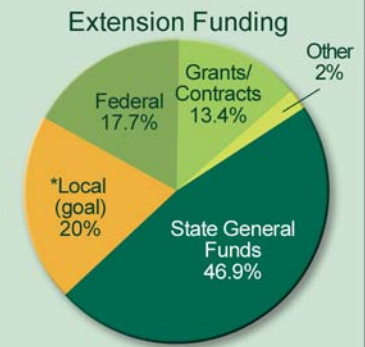
75 Volunteers - 4-H, Master Gardeners, Family & Community, Master Horseman,

Parish Facts

LSU AgCenter County Agents provide research-based information on plant, aquaculture, wildlife and animal enterprises to Morehouse Parish clientele. The 2008 total dollar amount from these commodities were:
 —Plant enterprises - \$161,570.186.
 —Aquaculture and wildlife - \$417,313
 —Animal enterprises - \$4,084,516

Data from the Louisiana Ag Summary
Web site: LSUAgCenter.com/agsummary

Population - 28,602
 Land area (square miles) - 794.25
 Persons under 18 years old - 24.4%
 Persons 65 years old and over - 16.1%
 Median household income - \$28,847
 Persons below poverty - 31%



**Local Funding
 Morehouse Parish Police Jury
 Morehouse Parish School Board
 Dedicated millage tax to the Morehouse Parish Office*

How we are funded.

You are the local supporters and beneficiaries in the LSU AgCenter's Extension programs. Just 20 percent support keeps these programs in your community.

Your parish extension office offers programs in:

- Sustaining Louisiana's agriculture, forestry and fisheries.
- Building leaders and good citizens through 4-H youth development.
- Family, nutrition, health and community development to enhance the quality of life for Louisiana citizens.

Local Issues & Plans for this year.

1. Increase productivity and profitability of Louisiana Agriculture.

- Continuing Parish wide Field Day
- Continuing crop result demonstration on all crops
- Write news column, web page content, and seminars on agriculture practices
- Continue farm and home visits

2. Promote the wise use of natural resources and protection of the environment.

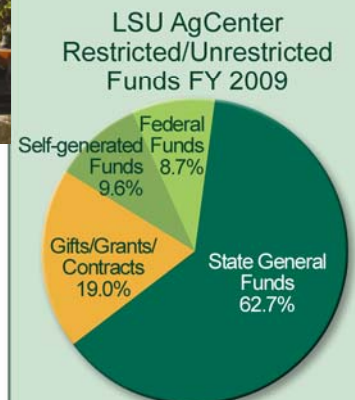
- Educate producers on current disposal of pesticide containers and waste
- Certify producers who use restricted use pesticides
- Educate 4-H youth on composting and re-cycling
- Provide water quality educational programs

-3. Build leaders and good citizens through 4-H youth development.

- School club programs and school enrichment will focus on character education
- Provide opportunities for youth to participate in educational workshops
- Develop and implement service learning projects throughout the parish
- Provide opportunity for youth to participate in shooting sports program

4. Strengthen families and communities

- FNP clients will receive training on feeding their families nutritionally on a budget
- Provide child development training
- Teach classes on reducing credit balances and examining spending habits.



For the latest research-based information on just about anything, visit our Web site: LSUAgCenter.com