

# Tensas Parish Profile



Report to Stakeholders

January 2011

## About the LSU AgCenter

The LSU AgCenter is dedicated to providing innovative research, information and education to improve people's lives. Working in a unique statewide network of parish extension offices, research stations and academic departments, the LSU AgCenter helps Louisiana citizens make the best use of natural resources, protect the environment, enhance agricultural enterprises and develop human and community resources.



## Program Highlights

### Family and Consumer Sciences

FCS focuses on programming in three areas: Family and Child Development, Nutrition and Family Resource Management. Parenting programs equip participants with the necessary tools to become self-sufficient while strengthening their skills in parenting children. The Family Nutrition Program educates youth and adults to make healthy food choices and be physically active to reduce risk for chronic disease. Clientele seek financial stability by improving money management skills.

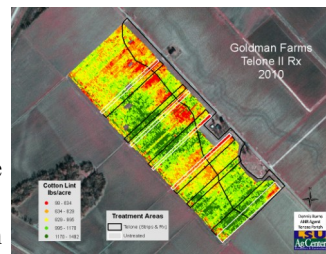
### 4-H Youth Development

Youth obesity is increasing across the country and Tensas Parish. More than 200 4-H youth and other students participated in educational programming relating to "Healthy Lifestyles," gardening practices and improving communication skills. Fourteen youth reported planting new home gardens this year. Fifteen youth participated in four livestock shows this past year. Progressive Farm Safety Day is held annually with all parish fifth- and sixth-graders learning safety tips for home, farm and community. More than 300 youth participated in Youth Wetlands Week. They learned how to make healthy food choices, the importance of fruits and vegetables in the diet and the role exercise plays in improving health.



### Agriculture and Natural Resources

With an agricultural driven economy, Tensas Parish producers must use all the resources that are available to support both themselves and the local economy. Crop production demonstrations are held in cooperation with producers for on-farm education. Precision agriculture demonstrations promote stewardship of the land and the production inputs used. Assistance with landscaping and home gardens is provided as one of the services of the Tensas Parish Extension Office.



### Louisiana Master Farmer Program/Environmental Education

Fifteen agricultural producers in north Louisiana completed the requirements to become 2009-2010 Certified Master Farmers in the Louisiana Master Farmer Program. More than 3,000 producers are enrolled in the program and 124 have completed certification with fully implemented conservation plans. Six field day presentations demonstrated the benefits of Best Management Practices to more than 370 producers. Three Louisiana Master Farmer Phase I trainings were conducted. Two six-day and one three-day environmental camps were conducted, focused on an in-depth study of the bottomland hardwoods ecosystem. Thirty-five youth and 32 adults, including staff, and 26 volunteers participated. Eleven state/federal agencies, two school districts and private donors provided funding and instruction at the camps.



## Tensas Parish Extension Office

**Address:** 107-A Arts Drive

St. Joseph, LA 71366

**Phone:** 318-766-3320

**Fax:** 318-766-3364

**Email:**

tensas@agcenter.lsu.edu

**Website:**

LSUAgCenter.com/Tensas

**Office Hours:**

8 a.m. to 4:30 p.m.

**Dennis Burns**

Parish Chair

dburns@agcenter.lsu.edu

**Jamie Russell**

Administrative Coordinator

jrussell@agcenter.lsu.edu

## Programs

**4-H and Youth Development**  
*Betsy Crigler*

**Agriculture & Natural Resources (ANR)**  
Aquaculture  
Animal Production  
Horticulture/Lawns and Gardens  
Pest Management  
*Dennis Burns*

**Family & Consumer Sciences (FCS)**  
Parents Preparing for Success  
Family Resource Management  
FNP-Family Nutrition Program  
Nutrition and Health

**La. Master Farmer Program**  
Environmental Science  
Upper Mississippi & Ouachita Watersheds

## Who we reach.

600 - Youth (includes 152 4-H members, eight school 4-H clubs, multi-parish outreach)  
 3,000 - Adults: 2,000-Ag and Natural Resources  
 1,000 Family and Consumer Sciences

### How we reach them:

4-H clubs	After-school classes
School enrichment	Demonstrations
Field days	Workshops
Newsletters	Websites
Publications	Multi-parish outreach
Camps	Distance education
Farm/home visits	Partnerships
Collaborations	Email

### Expanding our efforts:

145 Volunteers - 4-H, Master Gardeners, environmental camps, Louisiana Master Farmer, demonstrations, multi-parish/state/organizational education efforts, Farm Safety Day, Ag Expo, Ag Adventures, Ag Alley

## Parish Facts

LSU AgCenter county agents provide research-based information on plant, aquaculture, wildlife and animal enterprises to Tensas Parish clientele. The 2010 total dollar amount from these commodities was:

- Plant enterprises - \$98,184,096
- Animal enterprises - \$705,299
- Aquaculture and wildlife - \$237,910

*Data from the Louisiana Ag Summary*

**Website: [LSUAgCenter.com/agsummary](http://LSUAgCenter.com/agsummary)**

Population - 5,609

Land area (square miles) - 602.48

Persons under 18 years old - 24.4%

Persons 65 years old and over - 15%

Median household income - \$26,135

Persons below poverty - 32.4%

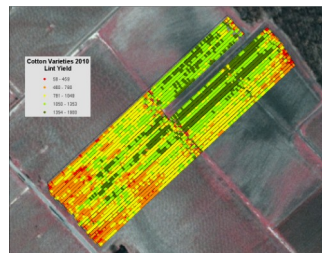
*Data from U.S. Census Bureau*

**Website: <http://quickfacts.census.gov>**

## Local Issues and Plans for this year

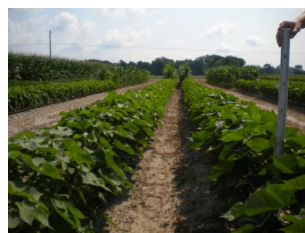
### 1. Increase productivity and profitability of Louisiana Agriculture.

- Conduct crop variety and production demonstrations
- Conduct precision agriculture demonstrations and assist growers with interpretation of resulting data and its potential use
- Write news articles and Web page content and conduct workshops on agriculture practices
- Conduct farm and home educational visits



### 2. Promote the wise use of natural resources and protection of the environment.

- Conduct Louisiana Master Farmer Program training sessions
- Present and teach at model farm and research station field days
- Conduct three Wild Woods Wanderings environmental camps
- Develop presentations at on-farm demonstrations
- Presentations at commodity production meetings, field trips, civic groups and schools related to soil, water, air, plant, animal and people related to environmental education



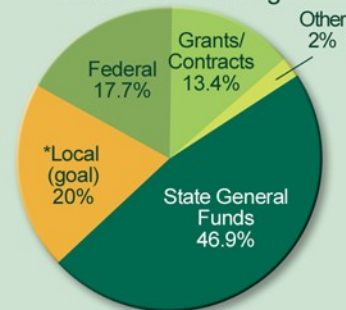
### -3. Build leaders and good citizens through 4-H youth development.

- Develop and implement service learning projects throughout the parish
- Initiate Garden Project
- Increase participation in parish, regional and state activities

### 4. Strengthen families and communities.

- Conduct educational trainings and demonstrations on nutrition and health
- Conduct multi-parish parenting trainings and workshops
- Teach classes on reducing credit balances and examining spending habits

### Extension Funding



\*Local Funding

Tensas Parish Police Jury  
 Tensas Parish School Board

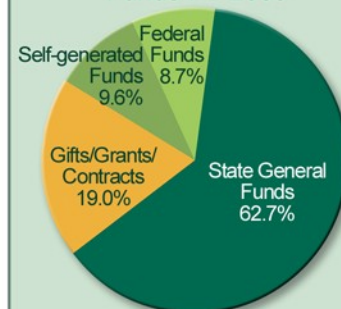
## How we are funded.

You are the local supporters and beneficiaries in the LSU AgCenter's Extension programs. Just 20 percent support keeps these programs in your community.

Your parish extension office offers programs in:

- Sustaining Louisiana's agriculture, forestry and fisheries.
- Building leaders and good citizens through 4-H youth development.
- Family, nutrition, health and community development to enhance the quality of life for Louisiana citizens.

### LSU AgCenter Restricted/Unrestricted Funds FY 2009



For the latest research-based information on just about anything, visit our Web site:

[LSUAgCenter.com](http://LSUAgCenter.com)